

REV. 9-18-89: ADDED NOTES FOR  
CLAMPS AND SHAFT LENGTHS.  
CHANGED MAX. SAG TO 5 PERCENT  
ADDED DETAILS FOR CONNECTORS  
AND CABLE CLAMPS.

REV. 7-29-96: REDREW SHEET ON  
CADD AND MADE MINOR CHANGES.

REV. 12-16-03: REDREW SHEET  
REMOVED PEDESTAL POLE DETAILS,  
REDREW TYPICAL SPAN WIRE LAYOUT  
ADDED QUICK DISCONNECT DETAIL  
AND ADDED SIGNAL MOUNTING  
DETAIL. ADDED HAND HOLE DETAIL.

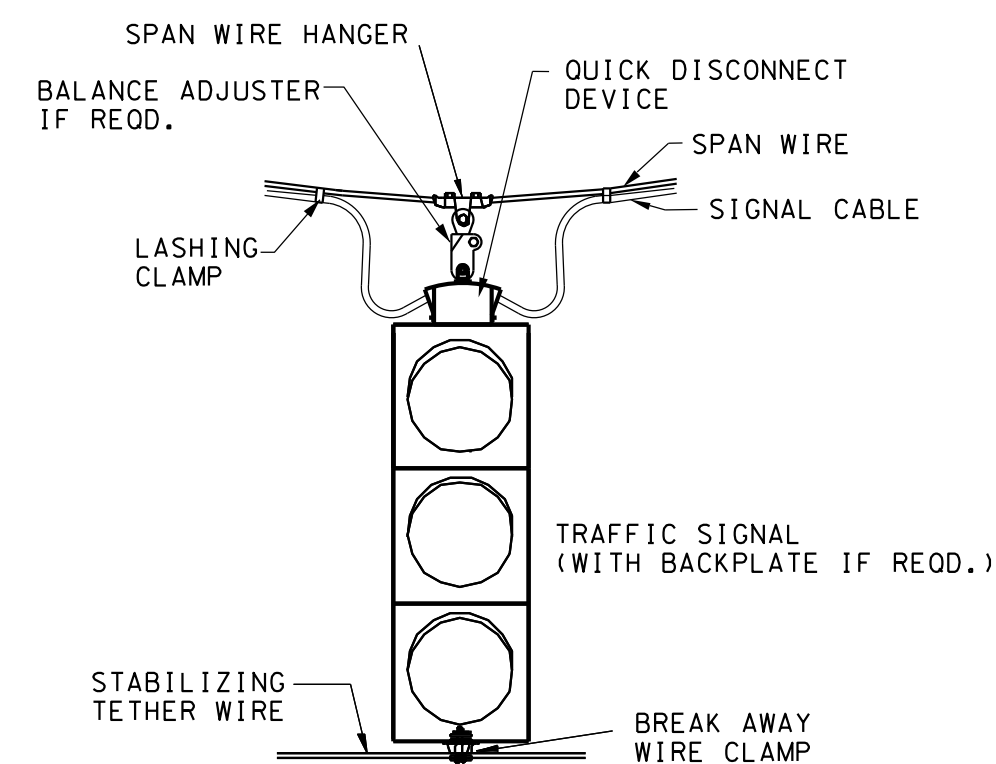
REV. 7-29-04: REDREW AND  
REDESIGNED SHEET.

REV. 11-1-11: REVISED R10-12  
SIGN TO BE USED AS AN OPTIONAL  
SIGN. REVISED GENERAL NOTE G.

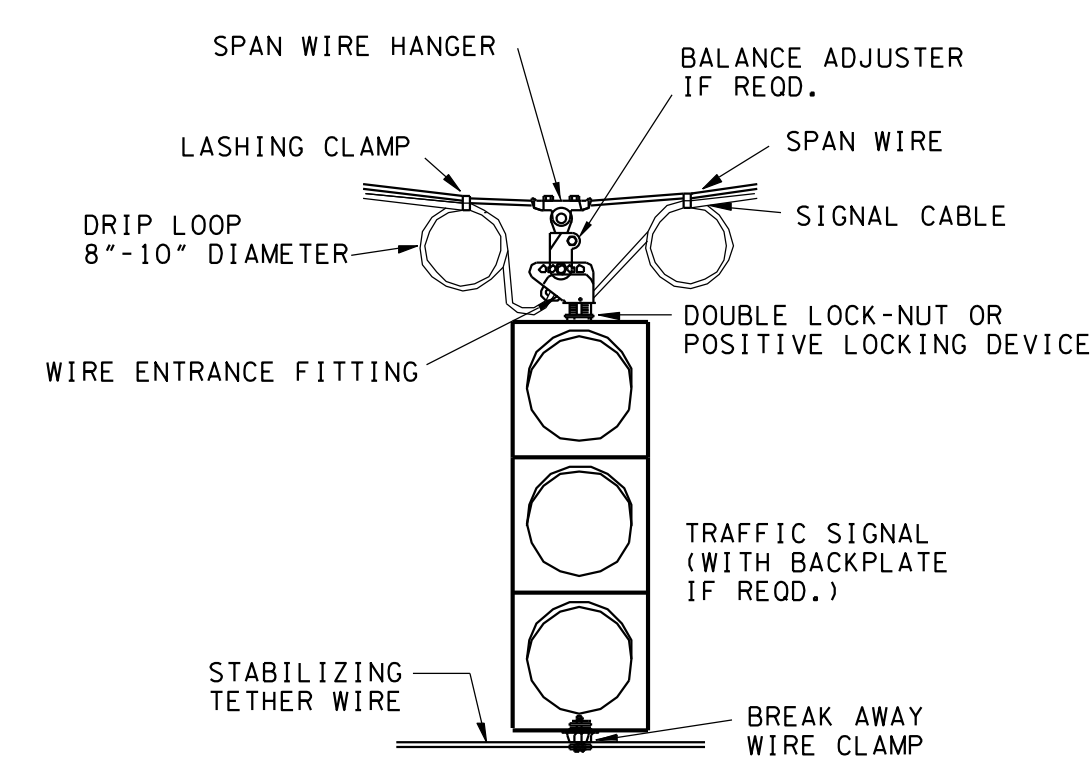
REV. 12-4-13: CHANGED ANCHOR BOLTS TO THREADED.

## STRAIN POLE GENERAL NOTES

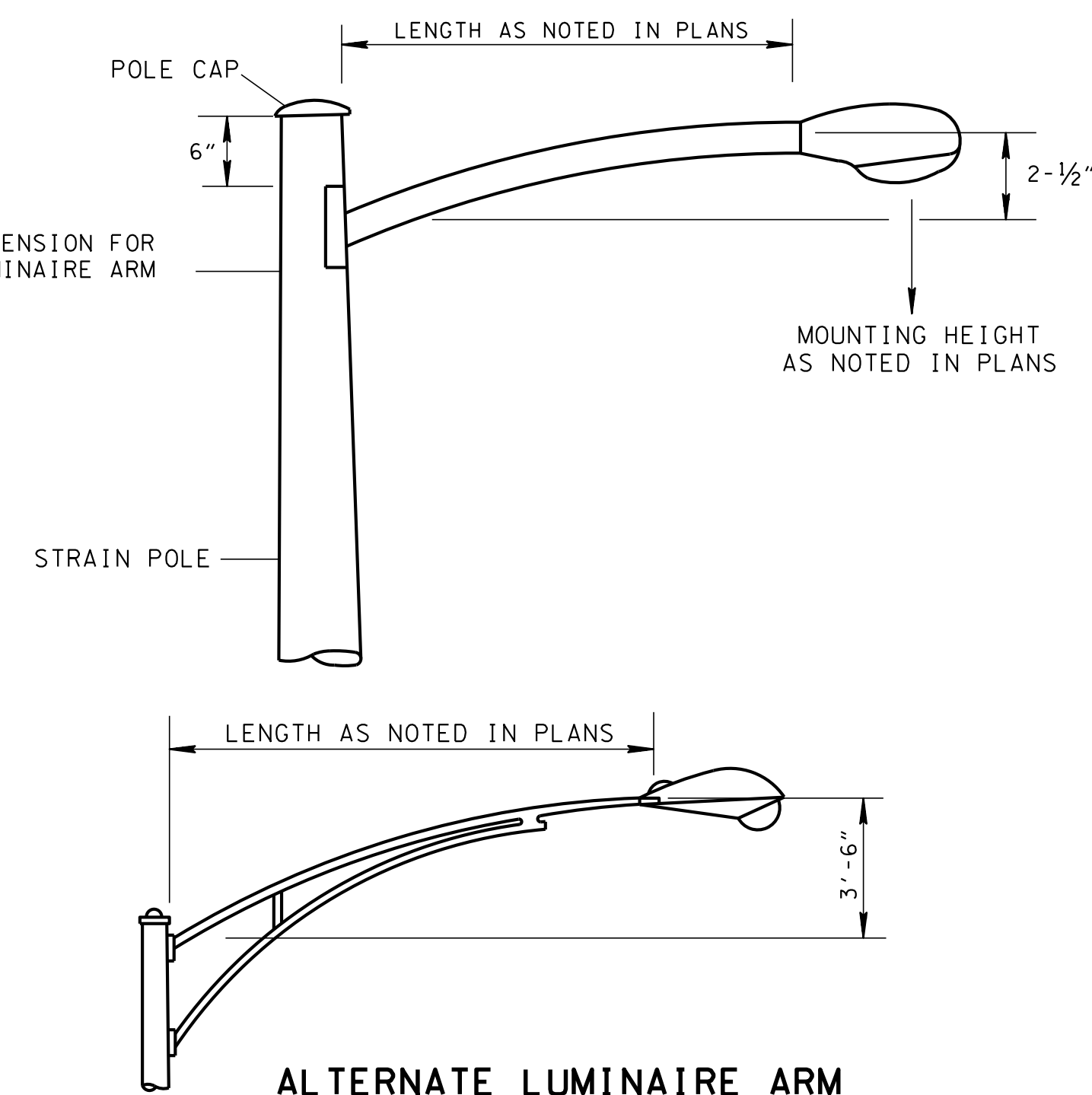
- (A) LOCATIONS OF SIGNAL POLES SHOWN ON PLANS ARE APPROXIMATE AND CAN BE ADJUSTED UP TO 5' TO AVOID UTILITIES. ADJUSTMENTS GREATER THAN 5' MUST BE REVIEWED AND APPROVED BY THE ENGINEER.
- (B) ALL STRAIN POLES AT AN INTERSECTION SHALL BE SAME DIAMETER AND BOLT CIRCLE.
- (C) TYPICAL AERIAL POWER SERVICE ENTRANCE IS THRU WEATHER HEAD AND DOWN POLE INTERNALLY. IF CABINET IS POLE MOUNTED, AS AN ALTERNATE POWER SERVICE CABLE MAY BE RUN DOWN OUTSIDE OF STEEL STRAIN POLE IN 1" RGS RISER. UNDERGROUND POWER SERVICE SHALL BE RUN THROUGH SEPARATE 1" RGS CONDUIT THROUGH POLE FOUNDATION (SEE STD. DWG. T-SG-5).
- (D) POWER SERVICE CABLE SHALL BE RUN ON SEPARATE MESSENGER CABLE (2' ABOVE SPAN WIRE WITH SIGNAL OR DETECTOR CABLES).
- (E) ADDITIONAL WEATHER HEADS MAY BE INSTALLED FOR EASE OF CABLE ENTRANCE IF NECESSARY (TO BE FIELD DRILLED AND TAPPED).
- (F) ENTRANCES FOR POLE MOUNTED SIGNAL HEADS SHALL BE FIELD DRILLED TO ENSURE PROPER PLACEMENT.
- (G) SIGNALS TO BE MOUNTED WITH 17' 6" TYPICAL VERTICAL CLEARANCE (16' 6" MIN.). MAXIMUM MOUNTING HEIGHT SHALL BE CHECKED PER MUTCD AND HEIGHT ADJUSTED IF NECESSARY. SEE SECTIONS 4D.12, 4D.13, 4D.15 AND 4D.16 OF THE CURRENT EDITION OF THE MUTCD FOR ADDITIONAL INFORMATION.
- (H) RED INDICATIONS TO BE APPROXIMATELY SAME HEIGHT. HANGER CONNECTOR EXTENDER OR TETHER EXTENDER MAY BE REQUIRED.
- (J) PEDESTRIAN SIGNAL HEADS TO BE CLAMSHELL MOUNTED UNLESS OTHERWISE SHOWN ON PLANS.
- (K) SEE STD. DWG. T-SG-4 FOR ADDITIONAL DETAILS.



ALTERNATE QUICK DISCONNECT MOUNTING  
HARDWARE DETAIL  
(IF REQD.)



### TYPICAL SIGNAL MOUNTING HARDWARE DETAIL



DETAIL FOR LUMINAIRE EXTENSION AS  
REQUIRED BY PLANS

☒ MINOR REVISION -- FHWA  
APPROVAL NOT REQUIRED.

STATE OF TENNESSEE  
DEPARTMENT OF TRANSPORTATION

# STRAIN POLE DETAILS FOR SPAN MOUNTED SIGNALS

T-SG-8